

Living Streams

DEEP RUN MENNONITE CHURCH EAST

This Week

E V E N T S

Upcoming Activities

April 30	Prayer Group	7:15 pm
May 2	National Day of Prayer	

May 7	Worship Commission Meeting	6:00 pm
May 8	Sewing Circle	8:30-2:30
	Leadership Board Meeting	7:00 pm
May 12	Mother's Day	
May 13	Trustee Meeting	7:00 pm
	Mission Commission Meeting	7:00 pm
May 14	Christian Education Meeting	7:00 pm
May 15	Mennonite Mission Day of Prayer	
May 16	Elders Meeting at Dublin Diner	6:00 am
	Senior Adult (70+) Spring Fellowship Meal	11:30 am
May 18	Community Yard Sale at DRE	8am-1pm
May 31	Life Line Screening	8:00-5:30
June 2	Graduate Recognition Sunday	
June 16	Baptism / New Member Sunday	

youth activities

May 1	JMYF Bible Study / MYF SWAN	7:00 pm
May 4	JMYF Service Day (RSVP by April 28th)	10:30 am
May 15	JMYF Bible Study / MYF SWAN	7:00 pm
May 19	MYF IRON PIGS Game	11:30 am

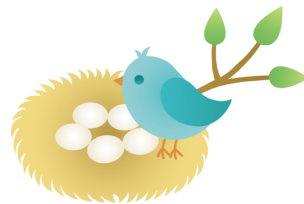
MYF Auction Follow-up

If you won a 5 pack of Wawa coupons on the MYF silent Auction, please see pastor Brent and he will make sure you receive them. *Thank you!*

Junior High: RSVP deadline is today for our May 4th activity. Please email or talk with a sponsor today if you'd like to participate. Also- **Next Sunday, May 5th**, the junior high Sunday School class will meet to hear Kathy Moyer speak about her trip to Africa. Please move forward and sit as a group.

BIRTHDAYS

April 28	Lisa Leatherman
April 29	Eric Myers Michael Gemmell
May 1	Donald Rice
May 2	Tyler Rice
May 5	Rhoda Detweiler
May 6	Scott Leatherman
May 8	Joshua Detweiler Terri Karte Tyler Hockman
May 17	Karen Clemmer
May 18	Karen Hohenstein



Member Change of Address

Sara Landis
Rockhill Mennonite Homes
32350 State Road
Personal Care Room# 2208
Sellersville, PA 18960
(215) 257-0812

The Mennonite

Our group subscription plan to **The Mennonite is renewing**. *The Mennonite*, magazine for Mennonite Church USA, seeks to fulfill its mission of helping readers glorify God, grow in faith and become agents of healing and hope in the world through articles that challenge and inspire, news that connects readers to the larger Mennonite community and much more. If you are interested in joining or renewing with our group plan, **please contact the office by May 5th**. Checks can be made payable to: *Deep Run Mennonite Church East* in the amount of \$37.00.



The 3 bay garage with a 2nd floor, across the street from the church is available for rent. If you are interested please speak with a Trustee.

Thank you,
Brian Bahnck, Dave Rice, Don Rice & Jake Rice.



Spring Senior (70+) Fellowship Luncheon

May 16, 2013 - 11:30 am

Flyers were placed in mailboxes. Please place your RSVP in the box found in the mailbox foyer area by May 5th.



Summer picnic time is coming! If you would like to have a picnic at the DRE pavilion be sure to fill out a facility rental form and reserve the date! There is no cost to members.



COMMUNITY YARD SALE!

Saturday, May 18th
8am-1pm

Come join us and shop for some bargains while helping a great cause! Light refreshments will be available for purchase.

We need your help to make this event successful. We are looking for your gently used items to sell at the yard sale. No electronics or stuffed animals please. Drop off your items on Friday, May 17th in the gym between 10am-8pm. Get started on your spring cleaning! All proceeds will benefit DRE's Children Without Choices Fund. A flyer was put in church mailboxes.



CLOSE TO HOME Resources

Deep Run East provides a series of helpful pamphlets that are designed to help Christian caregivers invite others to journey toward wholeness. Each pamphlet includes a story of someone who has moved toward healing; basic information about the issue; an explanation of how the Bible and the Christian story address the issue, and encouragement and the next steps on who to talk to and what questions to ask. Some of the topics are: Bullying, Dementia, Depression, Electronic addiction, Marital discord, Overwhelming debt and more... Look for them in the church entrance and vestibule areas.

Dublin Day and Art Festival—Sunday, June 2nd (12:00 pm -5:00 pm)

Volunteers needed for 1-2hour time slots for the Deep Run East booth. We will set up everyone's favorite...the "soda toss" game! Also needed...**64oz sodas**. To volunteer to help at the booth contact a Mission Commission member (Barb Rice, Pat Bishop, Leah Ludwig, Phil Nyce, or Kathy Myers). Drop sodas off anytime in the prayer room.



It's that time of year again to be thinking of **Vacation Bible School - Week of June 24-28**

We're looking for LOTS of volunteers to make this VBS a success. Extra volunteer forms can be found in the mailbox foyer area. **Return your sign-up sheets to Kirsten Rice's mailbox.**

Register online at www.deepruneast.org
Register by June 7th.
(Preschoolers must turn 4 by Sept. 1, 2013)



2013 Ministry Volunteer Opportunities

Gift Discernment would like to continue receiving the nomination/volunteer forms for a few more weeks. Please consider how you might use your spiritual gifts to fulfill the DRE mission of bringing others in contact with God through volunteering. Extras copies are available in the mailbox foyer area. Please return completed forms to the box in the foyer area.

Life Line Screening is coming to DRE again on Friday, May 31, 2013

About Life Line Screening: At Life Line Screening, our mission is to make people aware of unrecognized health problems and encourage them to seek follow-up care with their personal physician. We are the leading provider of community-based preventive health screenings in the United States. Find out more by visiting our website online at: www.lifelinescreening.com or call 1-800-449-2350